



## Silver Line S470



# Silver Line S470N, S470NS, S470NL Technical Data

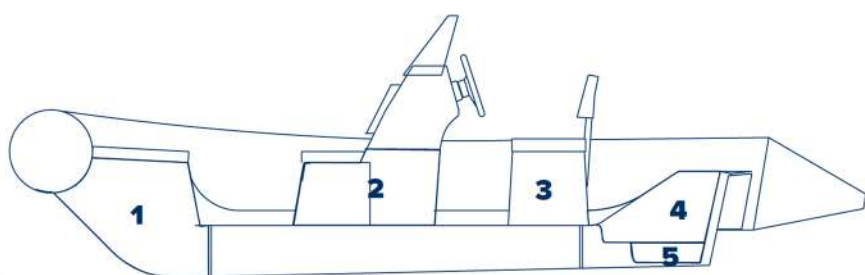
Length overall, cm .....	470
Width overall, cm .....	205
Length inside, cm .....	340
Width inside, cm .....	100
Tube diameter, cm .....	50
Bare boat weight*, kg .....	170/200/208
Transport gross weight**, kg .....	226/256/265
Loading capacity***, kg .....	900
Engine recommended, HP.....	50

Engine max***, HP .....	70
Engine weight max, kg .....	150
Engine shaft length, inch .....	20”(L)
Midsection/aft deadrise, degrees .....	20°/15°
Bottom type .....	RIB
Boat design category**** .....	D,C

**Remarks:**

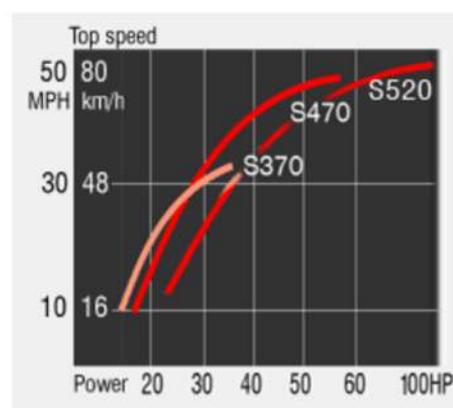
- \* - The bare boat weight is just a weight of the empty boat without any removable accessories.
- \*\* - The transport gross weight is the a weight of the complete boat in standard package.
- \*\*\* - Because of differences of local boatbuilding standarts The Loading capacity and Maximum Engine Power may vary by country. Please check that with your local GRAND dealers.
- \*\*\*\* - Boat design category under European Union Directive 2013/53/EU.

## Compartment Chart



- |                        |                              |
|------------------------|------------------------------|
| 1 - Bow locker         | 4 - Rear open storage volume |
| 2 - Console storage    | 5 - Water collector          |
| 3 - Double seat locker |                              |

## Performance Chart



Performance data are approximate for boat with light load

<b>Tube</b> 	<b>GRP</b> 	<b>Upholstery</b> 
-----------------	----------------	-----------------------

### Standard Features

- Deep-V hull with original “DART-hull” system
- Soft curved multi-chamber inflatable tube
- Molded in spacious bow locker with access cover
- Towing bow eye, two front and two rear lifting eyes
- Bow grab handle, safety grab handles
- Tough raised rubbing strake with splash guard
- Cockpit drain plug (bailer) and hull drain plug
- Tough raised rubbing strake with splash guard

### Sport Version

- Steering console CS-03 with windshield and handrail
- Mechanical steering system with steering wheel

### Deluxe Version

- Steering console CL-14 with windshield, handrail
- Mechanical steering system with steering wheel
- Rear double seat SD-10 with seat back and stowage
- Bow locker removable cushion

### Optional Equipment

- Removable sundeck for S470NL
- Complete electric package
- Fiberglass step ends of the inflatable tube
- Stainless steel folding navigation arch
- Bow step plate with anchor roller and cleat
- Bow locker removable cushion (S470N and S470NS)
- Collapsible bimini top
- Overall cover, console cover
- Overpressure valve
- Keel and tube protector packages
- SILVERTEX upholstery upgrade
- SeaDek antiskid set (for DELUXE version)

YOUR LOCAL DEALER

