



GRAND
INFLATABLE BOATS



Golden Line 6850



Golden Line G850 Technical Data

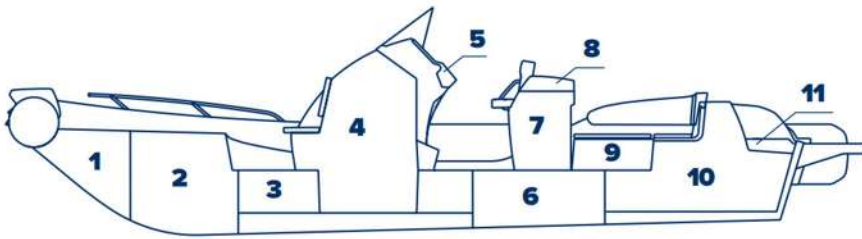
Length overall, cm	850
Width overall, cm	295
Length inside, cm	640
Width inside, cm	175
Tube diameter, cm	60
Bare boat weight*, kg	1200
Transport gross weight**, kg	2080
Loading capacity***,kg	2000
Engine recommended, HP	300

Engine max***, HP	400
Engine weight max, kg	480
Engine shaft length, inch	30”(UL)
Midsection/aft deadrise, degrees	30°/25°
Bottom type	RIB
Boat design category****	B

Remarks:

- * - The bare boat weight is just a weight of the empty boat without any removable accessories.
- ** - The transport gross weight is the a weight of the complete boat in standard package.
- *** - Because of differences of local boatbuilding standarts The Loading capacity and Maximum Engine Power may vary by country. Pleace check that with your local GRAND dealers.
- **** - Boat design category under European Union Directive 2013/53/EU.

Compartment Chart

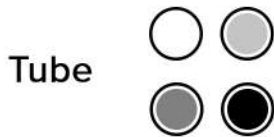


- | | |
|---------------------------|--|
| 1 - Bow anchor storage | 7 - Double seat / Refrigerator storage |
| 2 - Bow locker | 8 - Basin / cooker plate |
| 3 - Under deck storage | 9 - Two side storage boxes |
| 4 - Console storage | 10 - Rear storage |
| 5 - Glove box with hatch | 11 - Ropes storage |
| 6 - Fuel tank compartment | |

Performance Chart



Performance data are approximate for boat with light load



Standard Features

- Deep-V fiberglass hull with transom extensions, bow towing eye and self-bailing cockpit
- Heavy-duty HYPALON tube
- Anchor locker and bow locker compartment
- Bow step plate with two cleats
- Steering console CL-21 with front lifting seat, wind-shield, handrail and glove box
- Helm and passenger SD-21 folding seats with hatch cover
- U-form rear seat with 2 side lockers, soft cushions and high seat back
- Stern locker with large access panel and gas springs
- Two stern handrails, cleats and towing eyes
- Built-in fuel system with 300 liter tank and sender

Grand Luxe Features

- Two swimming platforms with folding ladder for one or two engines
- Stainless steel bow rails
- Two rear rope hatches
- Waterski towing arch with GRP top

Optional Equipment

- Electric anchor with lifting mechanism
- Hydraulic steering system
- Cooling drawer
- Water shower set with pump and 100l tank
- Washdown system
- Overall cover, consoles and rear seat covers
- Removable table with 4 cup holders
- Rear sundeck
- Stainless steel bimini top
- Keel protector
- 2 overpressure valves
- SILVERTEX upholstery upgrade
- SeaDek antiskid set

YOUR LOCAL DEALER

