



1 / 3

G850 is our new flagship from the season-2016 and our first boat certified under the category of B (offshore).

The exceptional seaworthiness, and presence of a huge fuel tank (capacity of 300 liters), as well as many additional elements of comforting the boat make possible to plan long trips without worrying about the bad weather conditions or fuel shortage.

Key ideas and philosophy of our largest RIB:

- new class of boat (much higher than G650);
- extraordinary seaworthiness;
- uncompromising reliability, capacity and safety;
- the possibility of using dual engines (2 \* 200 hp) can be especially important for professional use (The Coast Guard, lifeguards, Police, Emergencies and others);
- delight due to the ideal boat control; vast space inside the boat; ability to make a very long and distant trips (due to seaworthiness, fuel tank 300l, washdown system etc.);
- high stability, floatation and loading capacity;
- extras and options (plenty of seating area in the bow cushions and rear sofa, the ability to install a really large modern chartplotter, a refrigerator, a table with a sink, a washdown system inside the console, etc.);
- modern design and top level of ergonomics in general.

G850 tubes are entirely made from Hypalon®. Recommended engine (300 hp) easily drives the boat with any permitted loading.

[Technical Data](#)
[Features & Options](#)
[Gallery](#)
[Video](#)

## Technical Data

Models		G850L
Length overall,	cm	850
	ft/inches	27' 11"
Length inside,	cm	640
	ft/inches	21' 0"
Width overall,	cm	295
	ft/inches	9' 8"
Width inside,	cm	175
	ft/inches	5' 9"
Tube diameter,	cm	60
	inches	24"
Bare boat weight *,	kg	1200
	lbs	2640
Transport gross weight **,	kg	2080
	lbs	4576
Loading capacity ***,	kg	2000



	RIBs	Foldables	Fiberglass boats	Accessories	New product lines	Gallery
Engine recommended,				HP	300	
				kW	220,6	
Engine max ***,				HP	400	
				kW	294,2	
Engine weight max,				kg	480	
				lbs	1056	
Engine shaft length				inches	30"(Ultralong)	
Midsection / aft deadrise				degrees	30° / 25°	
Stowed dimensions of package №1,				cm	850	
				cm	260	
				cm	230	
				ft/inches	27' 11"	
				ft/inches	8' 6"	
				ft/inches	7' 7"	
Bottom type					RIB	
Boat design category ****					B	

## Remarks:

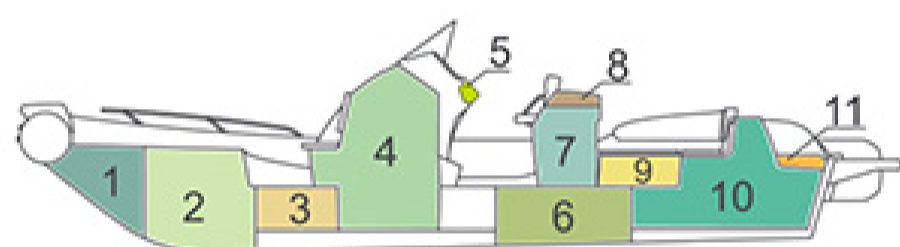
\* – The bare boat weight is just a weight of the empty boat without any removable accessories.

\*\* – The transport gross weight is the a weight of the complete boat in standard package.

\*\*\* – Because of differences of local boatbuilding standarts The Loading capacity and Maximum Engine Power may vary by country. Please check that with your local GRAND dealers.

\*\*\*\* – Boat design category under Classification of European Directive for Recreational crafts № 94/25/CE.

Compartment Chart



- |                                       |                           |
|---------------------------------------|---------------------------|
| 1 -Bow anchor storage                 | 2 -Bow locker             |
| 3 -Under deck storage                 | 4 -Console storage        |
| 5 -Gloves box with hatch              | 6 -Fuel tank compartment  |
| 7 -Double seat / Refrigerator storage | 8 -Basin / cooker plate   |
| 10 -Rear storage                      | 9 -Two side storage boxes |
|                                       | 11 -Ropes storage         |

Performance chart



All the performance data are approximate for boats loaded light.

## Features & Options

Standard Features	G850L	G850GL
Deep-V fiberglass hull with transom extensions, bow towing eye and self-bailing cockpit	•	•
Heavy-duty HYPALON tube	•	•
Anchor locker, Bow locker compartment	•	•
Bow step plate with two cleats	•	•
Steering console CL-21 with front lifted seat, windshield, railings and gloves box	•	•
Driver's double seat SD-21 with two folding seats and lifted hatch	•	•
U-foam rear seat/sofa with 2 side lockers, soft cushions and high seatback	•	•
Rear locker with large access door and gas springs	•	•
Rear railings, two rear cleats and two towing eyes	•	•
Built-in fuel system with 300l fuel tank and sender	•	•
Two swimming platforms with folding ladder for one or two engines		•
Two rear rope hatches		•
Stainless steel bow railing		•
Waterski towing arch with GRP top		•

Optional Equipment	G850L	G850GL

Water shower set with pump and 100l tank	•	•
Washdown system	•	•
Overall cover, consoles and rear seat covers	•	•
Removable table with 4 cup holders	•	•
Rear Sundeck	•	•
Stainless steel bimini top	•	•
Keel protector	•	•
2 overpressure valves	•	•

## Video Show



## Documentation



[Presentation](#)



[User's manuals](#)



[Declaration of Conformity](#)



[CE certificate](#)



[Press](#)

Share



## Create my own GRAND

Start customising your GRAND, from the equipment on board to the fabrics on the seats.

[Create now](#)



[ABOUT](#)  
[NEWS](#)  
[CONTACTS](#)

[BUSINESS](#)  
[ADVISOR](#)  
[OWNER RESOURCES](#)

+ 380 57 7840125  
mail@grandmarine.com.ua

Potemkina str. 18a  
Solonicevka 62370  
UKRAINE