



Silver Line S420



Silver Line S420N, S420NS, S420NL Technical Data

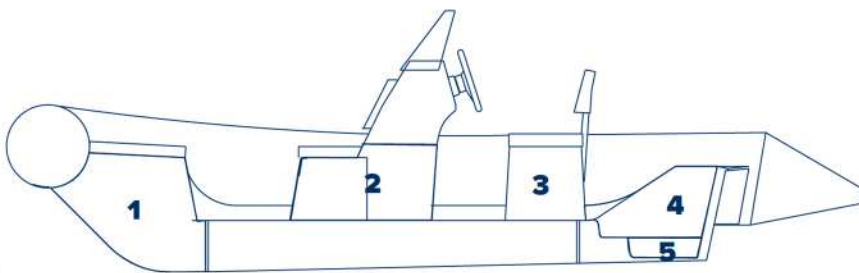
Length overall, cm420
 Width overall, cm195
 Length inside, cm 310
 Width inside, cm 101
 Tube diameter, cm 46
 Bare boat weight*, kg115/145/145
 Transport gross weight**, kg 178/209/210
 Loading capacity***,kg 700
 Engine recommended, HP..... 40

Engine max***, HP 50
 Engine weight max, kg 115
 Engine shaft length, inch 15",20"
 Midsection/aft deadrise, degrees 20°/17°
 Bottom type RIB
 Boat design category**** D,C

Remarks:

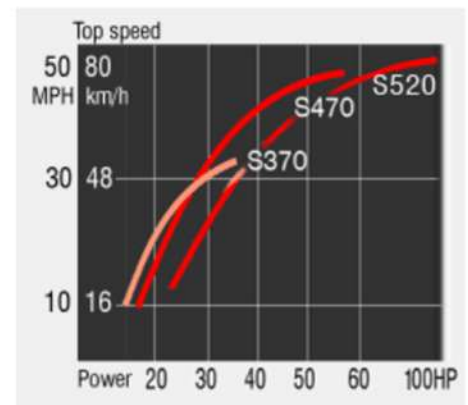
- * - The bare boat weight is just a weight of the empty boat without any removable accessories.
- ** - The transport gross weight is the a weight of the complete boat in standard package.
- *** - Because of differences of local boatbuilding standarts The Loading capacity and Maximum Engine Power may vary by country. Please check that with your local GRAND dealers.
- **** - Boat design category under European Union Directive 2013/53/EU.

Compartment Chart



- 1 - Bow locker
- 2 - Console storage
- 3 - Double seat locker
- 4 - Rear open storage volume
- 5 - Water collector

Performance Chart



Performance data are approximate for boat with light load

Tube 	GRP 	Upholstery
-----------------	----------------	-----------------------

Standard Features

- Medium "V" double shell fiberglass hull with DART performance system and antiskid surface
- Soft curved multi-chamber inflatable tube
- Molded in large bow locker with access cover
- Two wooden seats (BASE only)
- Two paddles (SPORT, DELUXE), two oars + oarlocks (BASE)
- Towing bow eye, two front and two rear lifting eyes
- Bow grab handle and safety grab handles
- Doubled draining system with two plugs and bailer

Sport Version

- Steering console CS-03 with windshield and handrail
- Mechanical steering system with steering wheel

Deluxe Version

- CL-11 steering console with windshield, st steel railing
- Mechanical steering system with steering wheel
- SD-06 double seat with soft seat, seat back and stowage
- Bow locker removable cushion

Optional Equipment

- Removable sundeck with soft cushion (S420NL)
- Complete electric package
- Fiberglass step ends for inflatable tube
- Folding stainless steel navigation arch
- Bow locker removable cushion (BASE and SPORT)
- Bow step plate with anchor roller and cleat
- Collapsible bimini top
- Overall cover, console cover
- Overpressure valve
- Keel and tube protector packages
- SILVERTEX upholstery upgrade
- SeaDek antiskid set (for DELUXE version)

YOUR LOCAL DEALER

