

# Rigid Inflatable Boat

# GOLDEN LINE

Models:  
G380, G380L, G380GL

## User`s Manual

are in force. You may apply for information to the appropriate water transport and shipping directorate, as well as to the water police.

■ Proper usage of boat equipment and accessories  
Use the boat equipment and accessories only on their direct purpose to ensure reliable service.

■ Availability of Oars  
Even when sailing with an outboard engine you should always have the oars available with you so that you were able to reach the shore without outside assistance in case of any damage to the boat.

■ Usage of emergency stop switch  
On your request any outboard engine seller may provide you engine with the emergency stop switch. During navigation the switch should be connected to the wrist of your hand by means of a cord. In case you fall overboard, even if being a steersman, arrangement will enable you to avoid any traumas and to reach the boat.

■ Prevention of damages caused by electrolyte or fuel leakage  
Take all possible precautions against penetration of fuel or electrolyte from the storage battery into the inflatable boat. If it does happen wash thoroughly the fouled spots with water.

■ Cargo arrangement and stowing, attachment of items and prevention of falling overboard  
You should be always sure that the number of people on board never exceeds that specified in the user's manual or on the manufacturer's plate provided on the transom. The boat will retain an adequate floatability and will not keel over only provided that the load is arranged reasonably. Therefore, do not accommodate all passengers on the same side of the boat. Arrange the cargo to be carried uniformly inside the boat, all

items being reliable secured on the bottom of the boat. All passengers should be accommodated inside the boat. The occupied seats should not be left throughout the entire sailing time. When sailing with an outboard engine the steersman should shift his body forward in the course of acceleration to prevent the boat forebody from raising under the force of upthrust waves.

■ Presence of sharp and pricking objects on board  
Despite the strong shell of the boat we are recommended to handle sharp and pricking objects being on board with care. For example, it concerns a knife blade, fish-hook point, etc.

■ Rocky shore, mole, shoals (for example, sand banks, coral reefs, rocks)  
Approach rocky shores, shoals, moles, etc. carefully to avoid damages to the boat. It is strictly prohibited to drag the boat across rough surfaces (shingle, rocks, concrete, etc.).

■ Check at navigation  
In case of prolonged navigation with the use of an outboard engine, regularly check to ensure that the engine is reliably attached to the boat. If the engine was attached carelessly the attachment may work loose under the action of vibration. Besides, check air chambers pressure at regular intervals, since the pressure may vary under the effects of outside air temperature and atmospheric pressure variations.

Never forget to monitor regularly the quantity of fuel in the fuel tank. Keep always in mind that the quantity of fuel should be sufficient for you to sail to your final destination.

■ Availability of rescue means (life-saving jackets, distress signals, spare parts)  
If you are planning to go beyond the protected water areas you should provide all passengers on board with life-saving jackets. All passengers should put on life-saving jackets under strong wind and heavy seaways conditions. Those

The rigid inflatable motor boat of the "GOLDEN LINE" series relates to the category of pleasure boats and is intended for water sports, tourism, the use as a floating means on board of launches, yachts and other vessels.

TECNICAL DATA SPECIFICATION

Model	Unit	G380 / G380G G380GLL
Length overall	m	3,8
	ft-inches	12'6"
Length inside	m	2,7
	ft-inches	8'10"
Width overall	m	1,82
	ft-inches	6'0"
Width inside	m	0,92
	ft-inches	3'0"
Tube diameter max	m	0,46
	ft-inches	18"
Number of chambers		3
Passenger capacity	pers.	5
Load capacity	kg	496
	lbs	1090
Boat weight	kg	128/160
	lbs	282/352
Engine power recommended	HP	30
	kW	22.1
Engine power max	HP	40
	kW	29.4
Engine weight max	kg	90
	lbs	198
Engine shaft length	ft-inches	20"(long)
Tube color		light-grey
Boat design Category(Dir.94/25/EC)		N

Dear user,  
 We thank you for your purchase and do hope that you will have a great fun of it. However, to make your joy and pleasure complete, we would request you to read carefully and observe the directions and recommendations specified below.

**IT IS STRICTLY FORBIDDEN :**

- to handle the boat in the state of intoxication and without individual rescue means being used (life-saving belts, jackets, etc.)
- **IT IS FORBIDDEN :**
- to overload the boat above the design weight-carrying capacity;
- to use an outboard engine of power exceeding the maximum allowable value;
- to bring the tube pressure up to the value exceeding the rated one (0.15 bar);
- to drag the boat across a rough surface.

■ Danger of usage of engine having insufficient or excessive power

According to the safety regulations, each inflatable boat should be furnished with an outboard engine having the maximum allowable power. You will find the data on the maximum allowable power of the engine on the manufacturer's plate with the designation of the model type inscribed thereon. The plate is fixed in the afterbody of the boat. However, you should choose the engine power within the allowable range so as to ensure that you may safely reach the shore when heading into the wind or into the current.

■ Observation of local shipping regulations

For each particular water area the local shipping regulations

Main conditions of long service life is right and careful service.

- Avoid excessive increasing of pressure in the board, especially from heating by the sun rays.
- After exploitation take off sand and dirt from boat surface, and carefully dry it.
- Avoid the water getting into the chambers. If a fuel or an oil / gas gets to the boat surface it is necessary to wash the soiling place by soap water as soon as possible and dry.
- Pay attention to the condition of bottom and seat surfaces.
- If the coating is destroyed it is necessary to dry this element and restore the defend ply.

■ After the season prepare the boat to winter keeping. Clean boat surface from sand and dirt and make the necessary repairs, if damages take place. If it is possible, keep the boat in the open and slightly pumped state in air temperature 0-25°C. The boat must be protected from the sun rays.

■ Insufficient boat repairing (eliminating the board punctures or cuts) you may carry out by yourself. In this case use the coated fabric patches from the complete set. Ask your dealer for the correct type of glue you may use for the repair.

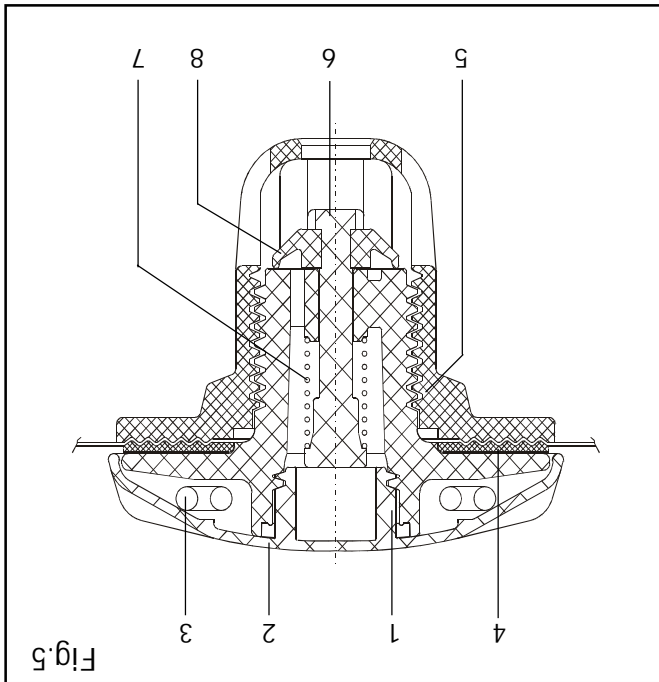
■ In case if sufficient damages of hull, tube body, partitions or seams it is recommended to apply for professional repair in authorised service station.

COMPLETE SET (continuation)

Model				G380	G380L/G380GL
Description	unit	q-ty	availability	availability	availability
3.3 Fuel level gauge	pcs.	1	<input type="checkbox"/>	<input type="checkbox"/>	
3.4 Fuel filler	pcs.	1	<input type="checkbox"/>	<input type="checkbox"/>	
3.5 Fuel tank vent	pcs.	1	<input type="checkbox"/>	<input type="checkbox"/>	
<b>4. Additional equipment</b>					
4.1 Steering console cover	pcs.	1	<input type="checkbox"/>	<input type="checkbox"/>	
4.2 Overall cover	pcs.	1	<input type="checkbox"/>	<input type="checkbox"/>	
4.3 One lever side-mount remote control with trim switch	pcs.	1	<input type="checkbox"/>	<input type="checkbox"/>	
4.4 Navigation light (white)	pcs.	1	<input type="checkbox"/>	<input type="checkbox"/>	
4.5 Navigation light (red, green)	pcs.	1	<input type="checkbox"/>	<input type="checkbox"/>	
4.6 Electric horn	pcs.	1	<input type="checkbox"/>	<input type="checkbox"/>	

— Your "GRAND" boat "GOLDEN LINE" complete set included this items.

Note: Perfection of the design and improvement of quality of our products is the fundamental production policy of our company. Therefore, alternations may be made to the complete set (and as the components parts become available).



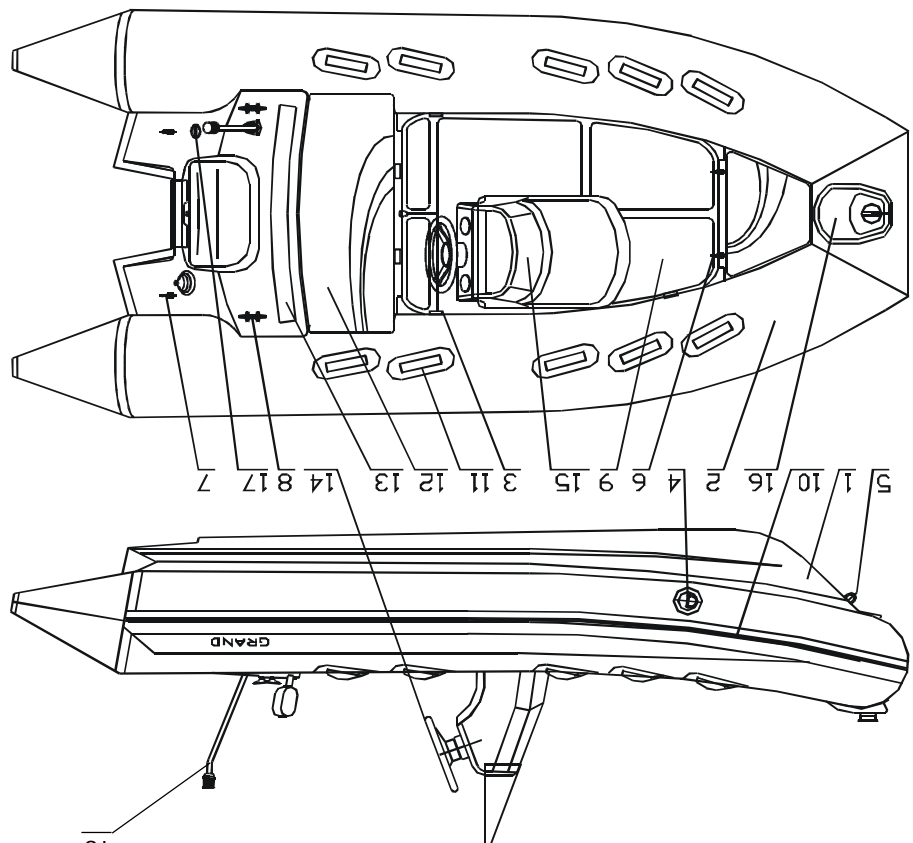
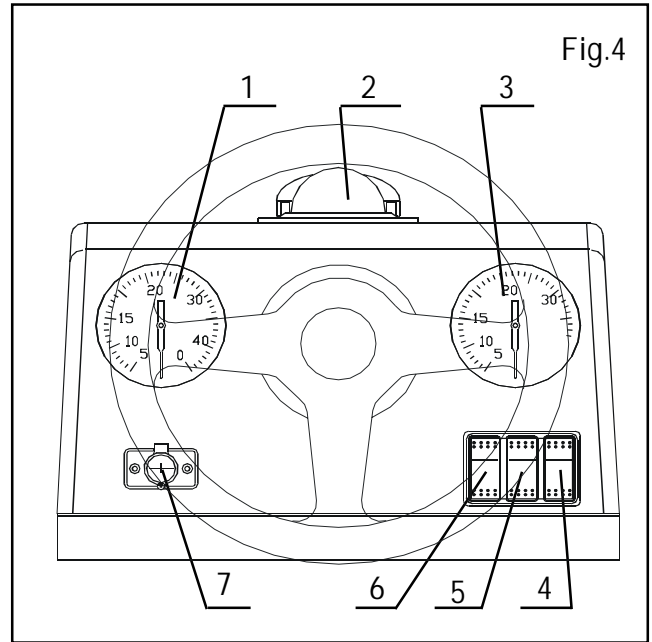
**INFLATION / DEFLATION VALVES OPERATION**

The inflation/deflation valve is intended for:  
 —filling the compartment with air from a standard pump or filling system and maintaining pressure in the tube for prolonged time,  
 —adjustable drop of pressure in compartment.  
 The air fill valve is designed as a tab-type non-return valve.  
 Every inflation / deflation valve includes the following parts : valve body 1, valve nut 5, valve cap 2 with strap 3, washer with gasket 4, spindle 6 with spring 7, cup diaphragm 8 ( Fig.5).  
**INFLATION MODE** : valve is closed with gasket 4 tight . To move the valve to deflation mode : push the button 6 and turn it clockwise to fix it in lower position  
**DEFLATION MODE** : button is fixed in lower position. To move the valve to inflation mode : push the button 6 and turn it counter clockwise. The button goes to upper position.  
**ATTENTION !**  
 1. Overinflating of your boat, when the air pressure is more than nominal, sufficiently decreases the boat life time.  
 2. The valves are airtight just in case they are closed with the caps tight.  
 3. The tube is airtight in case it keeps its form for 8 hours at least.

**CONSOLE EQUIPMENT**

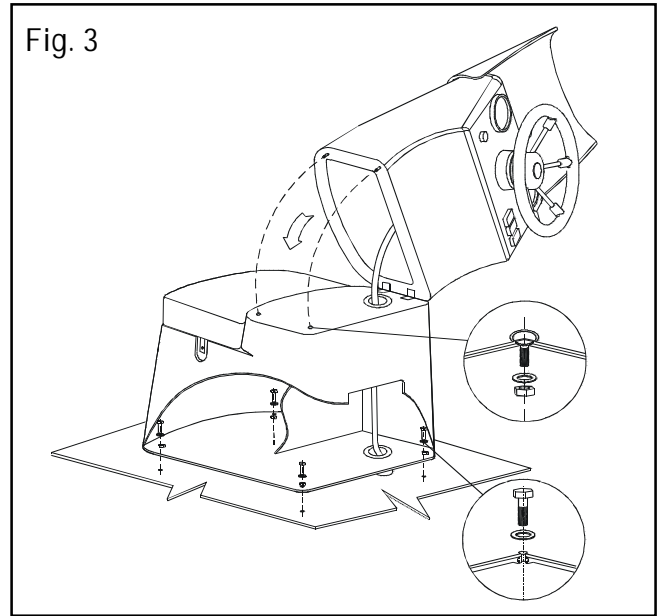
Console equipment included(Fig.4):

- steering system;
- steering cable;
- steering wheel;
- compass (3) (optional equipment);
- tachometer (1)(optional equipment);
- speedometer (2)(optional equipment);
- electric accessory socket(7);
- switches:
- horn(6);
- hull drain pump(5);
- navigation lights(4).

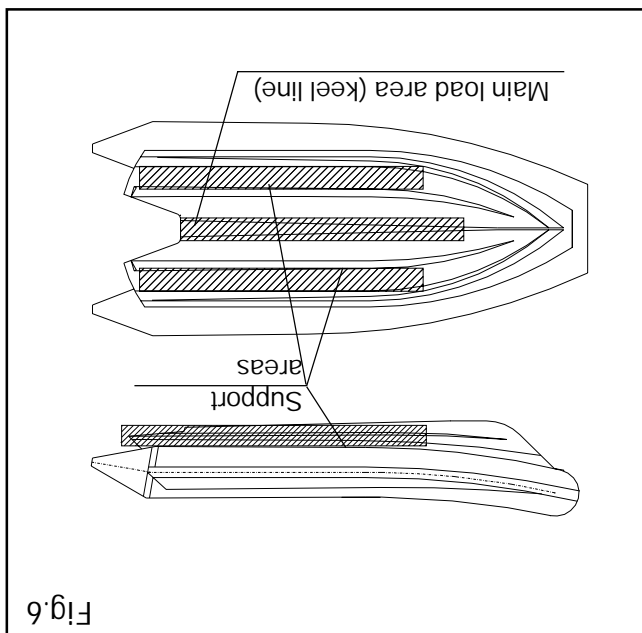


Pos	Item
1	Fiberglass hull
2	Buoyancy tube
3	Inflation / deflation valve
4	Tube towing eye
5	Hull towing eye
6	Front lifting eyes
7	Rear lifting eyes
8	Rear bollards
9	Antiskid deck surface
10	Rubrail
11	Safety grab handles
12	Molded-in helm seat
13	Helm seat back
14	Steering wheel
15	Deluxe steering console CL-02
16	Bow step plate with rope cleat
17	Fuel filler
18	Navigator light

- connect electric cable to the steering console (see wiring diagram);
  - install the steering console (see Fig. 3) , before installation put weather stripping along the edges of the console then install the console on regular places of the deck, and fix it by means of the bolts M8x25, washers from the complete set.
  - tighten all the bolts;
- 5 Install the steering console seat and fix them by means of the toggle fasteners. Close and fix overhead part steering console by means of washers and nut M8 from complete set. Tighten all the bolts;
  - 6 Fill the tube compartments with air using the pump from the complete set. On completion of filling close the valves with caps. The rated pressure value is 0.15 bar.



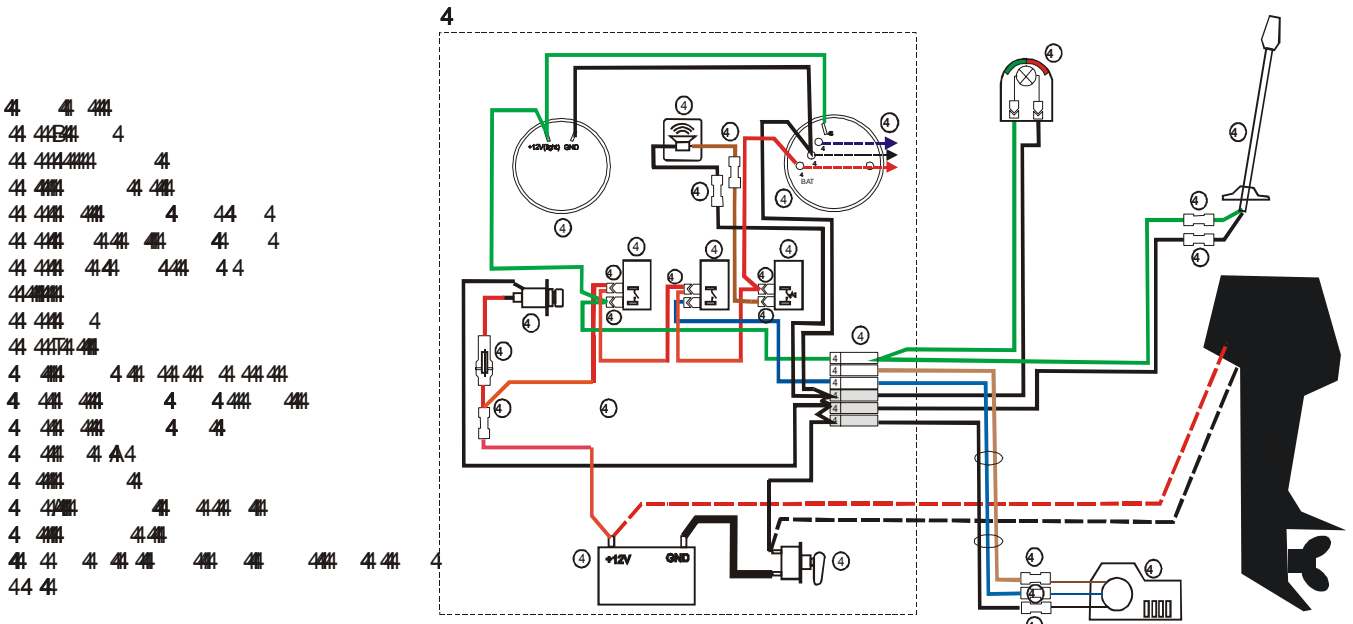
**ATTENTION!** To avoid the water penetration into the console inner layers, please, tight all hole free space with any water resistant filler.



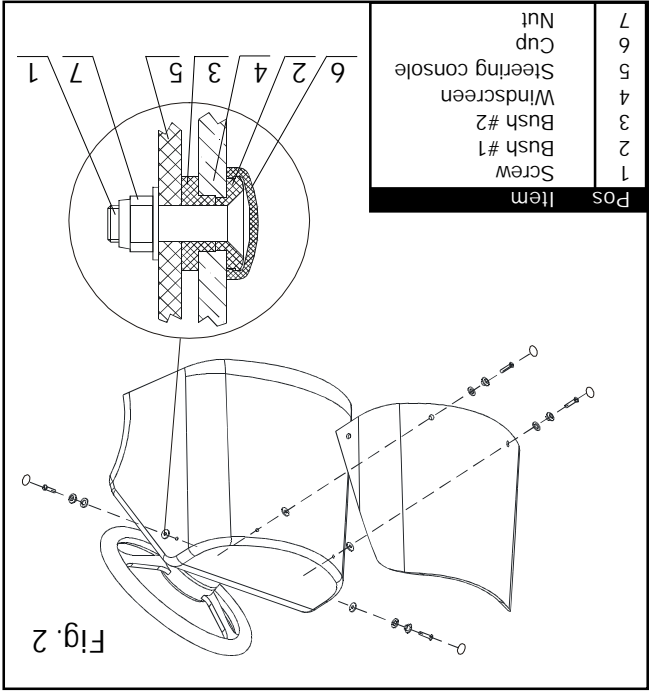
**IT IS FORBIDDEN!**  
 In order to avoid the hull damage trail the boat no staying on the side areas only.  
 When trailering fix the boat securely on the trailer, bearing rollers must support the boat on signled out position (Fig.6).  
 The maximum load should be located on the keel line. The side areas of the bottom may be used for support purposes only.

**BOAT TRAILERING**

Wiring diagram



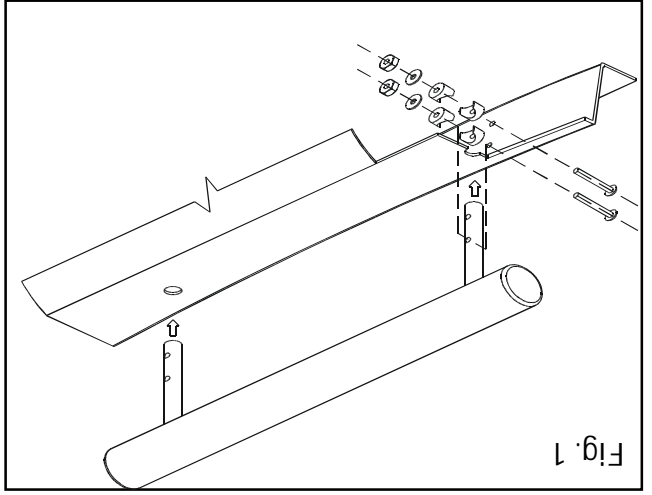
- 4 4 444
- 4 4444 4
- 4 4444444 4
- 4 4444 4 444 4
- 4 4444 4444 44 4
- 4 4444 4444 444 4 4
- 4 44444
- 4 4444 4
- 4 4444444
- 4 444 4 44 44444 4 44444
- 4 444 4444 4 4 4444 4444
- 4 444 4444 4 44
- 4 444 4 444
- 4 44444 44 44444 44
- 44 44



Pos	Item
1	Screw
2	Bush #1
3	Bush #2
4	Windscreen
5	Steering console
6	Cup
7	Nut

- align holes in the windscreen with holes in the console seat;
- console seat;
- attach steering system cable in accordance with its own installation (manual);

- insert seat-back support into the holes of overhead seating part;
- fix seat-back by means of the shaped bolts M6x50, shaped washers, washers and arretter nuts M6 from the complete set;
- 4 Steering console mounting:
- mount the outboard engine on the transom in accordance with its own installation instruction (User's manual of your outboard engine);
- extend the engine remote control cables and steering cable from engine mounting place to steering console mounting place through the holes on the deck and helm storage;
- unfix and hinge out overhead part of steering console and steering



- 1 Unpack the boat and unfold the inflatable tube.
- 2 Set all valves in the operation condition (look below).
- 3 Install the molded-in helm seat back (see Fig. 1);

COMPLETE SET (continuation)

Description	Model	unit	q-ty	G380	G380L/G380GL
				availability	availability
2.6 Tachometer		pcs.	1	<input type="checkbox"/>	<input type="checkbox"/>
2.7 Compass		pcs.	1	<input type="checkbox"/>	<input type="checkbox"/>
2.8 Navigation lights switch		pcs.	1	<input type="checkbox"/>	<input type="checkbox"/>
2.9 Electric horn switch		pcs.	1	<input type="checkbox"/>	<input type="checkbox"/>
2.10 Drain pump switch		pcs.	1	<input type="checkbox"/>	<input type="checkbox"/>
2.11 Electric accessory socket ( phone charge pluge)		pcs.	1	<input type="checkbox"/>	<input type="checkbox"/>
2.12 Battery disconnecter with wire		pcs.	1	<input type="checkbox"/>	<input type="checkbox"/>
2.13 Battery container		pcs.	1	<input type="checkbox"/>	<input type="checkbox"/>
2.14 Screw M6X25		pcs.	4	<input type="checkbox"/>	<input type="checkbox"/>
2.15 Screw bush #1		pcs.	4	<input type="checkbox"/>	<input type="checkbox"/>
2.16 Bush #2		pcs.	4	<input type="checkbox"/>	<input type="checkbox"/>
2.17 Cup		pcs.	4	<input type="checkbox"/>	<input type="checkbox"/>
2.18 Washer 6		pcs.	4	<input type="checkbox"/>	<input type="checkbox"/>
2.19 Arrester nut M6		pcs.	4	<input type="checkbox"/>	<input type="checkbox"/>
2.20 Bolt M8		pcs.	4	<input type="checkbox"/>	<input type="checkbox"/>
2.21 Washer 8		pcs.	4	<input type="checkbox"/>	<input type="checkbox"/>
3. Fuel system					
3.1 Fuel tank		pcs.	1	<input type="checkbox"/>	<input type="checkbox"/>
3.2 Fuel level sender		pcs.	1	<input type="checkbox"/>	<input type="checkbox"/>

If you believe that the shore is just nearby stay in the boat, since you will be looked for in this particular place and, most probably, will be found. Should the boat become partially flooded throw heavy objects (batteries, fuel tank, engine) overboard to ensure additional floatability.

The "GRAND" Company employees would like to wish you a pleasant and safe leisure time!

passengers who cannot swim should always carry the life-saving jackets while on board! It is also recommended to keep constantly distress signal means on board.

■ Towing  
At towing the towing rope length should not be at least 3 lengths of the boat, the rope being secured to both boats in a manner ensuring its immediate, single-motion release. The steersman of the towed boat should be assisted by another crew member to monitor the process of towing. In this case, certain communication gestures should be agreed upon beforehand.

■ Damage to one of air chambers  
The inflatable boat is designed to provide an adequate stability in case of the complete damage to one the air chambers (balloon compartments) at the expense of the remaining air chambers and the hull. Thanks to it, you will be able to reach safely the nearest shore. Reduce the speed and shift your body to the undamaged part of the boat. Watch changes in stability. After this immediately head for the nearest shore. To prevent penetration of water into the boat, pull the shell of the damaged air chambers upwards.

■ Anchor and mooring fast fastening  
Fix the anchor and towing ropes in the forebody of the boat to the front towing ring. Fix the back spring on the transom via special holes.

■ Danger of currents and wind  
Before navigation of the boat in unfamiliar waters make detail inquiries about local conditions and regulations! Currents, wind, shoals, rising and falling tides, as well as weather variations may imply serious danger!

■ In emergency stay in boat  
In any unexpected situation (engine failure, boat damage, etc.) do not ever leave the boat provided it is still afloat. Even

COMPLETE SET

Description	Model		G380	G380L/ G380GL
	unit	q-ty	availability	availability
1. Inflatable boat	pcs.	1	<input type="checkbox"/>	<input type="checkbox"/>
1.1 Automatic bilge pump with pipe	pcs.	1	<input type="checkbox"/>	<input type="checkbox"/>
1.2 Bow locker with cushion	pcs.	1	<input type="checkbox"/>	<input type="checkbox"/>
1.3 Molded-in helm seat with cushion and stern locker	pcs.	1	<input type="checkbox"/>	<input type="checkbox"/>
1.4 Helm seat back	pcs.	2	<input type="checkbox"/>	<input type="checkbox"/>
1.5 Bolt M6X50	pcs.	4	<input type="checkbox"/>	<input type="checkbox"/>
1.6 Shaped washer	pcs.	8	<input type="checkbox"/>	<input type="checkbox"/>
1.7 Washer 6	pcs.	4	<input type="checkbox"/>	<input type="checkbox"/>
1.8 Arrester nut M6	pcs.	4	<input type="checkbox"/>	<input type="checkbox"/>
1.9 Oar / paddle	pcs.	2	<input type="checkbox"/>	<input type="checkbox"/>
1.10 Foot pump	pcs.	1	<input type="checkbox"/>	<input type="checkbox"/>
1.11 Set of spare parts and repair kit	pcs.	1	<input type="checkbox"/>	<input type="checkbox"/>
1.12 Maintenance kit & User's manual	pcs.	1	<input type="checkbox"/>	<input type="checkbox"/>
2. Steering console CL-02	pcs.	1	<input type="checkbox"/>	<input type="checkbox"/>
2.1 Windscreen	pcs.	1	<input type="checkbox"/>	<input type="checkbox"/>
2.2 Steering system	pcs.	1	<input type="checkbox"/>	<input type="checkbox"/>
2.3 Steering cable	pcs.	1	<input type="checkbox"/>	<input type="checkbox"/>
2.4 Steering wheel	pcs.	1	<input type="checkbox"/>	<input type="checkbox"/>
2.5 Speedometer	pcs.	1	<input type="checkbox"/>	<input type="checkbox"/>

Quality inspection stamp

Date of manufacture

SERIAL No.

MODEL