

**DIMENSION (cm)**

Length overall	330
Length internal	218
Width overall	169
Width internal	78
Engine max (HP)	25
Engine recommended (HP)	15

**CAPACITY**

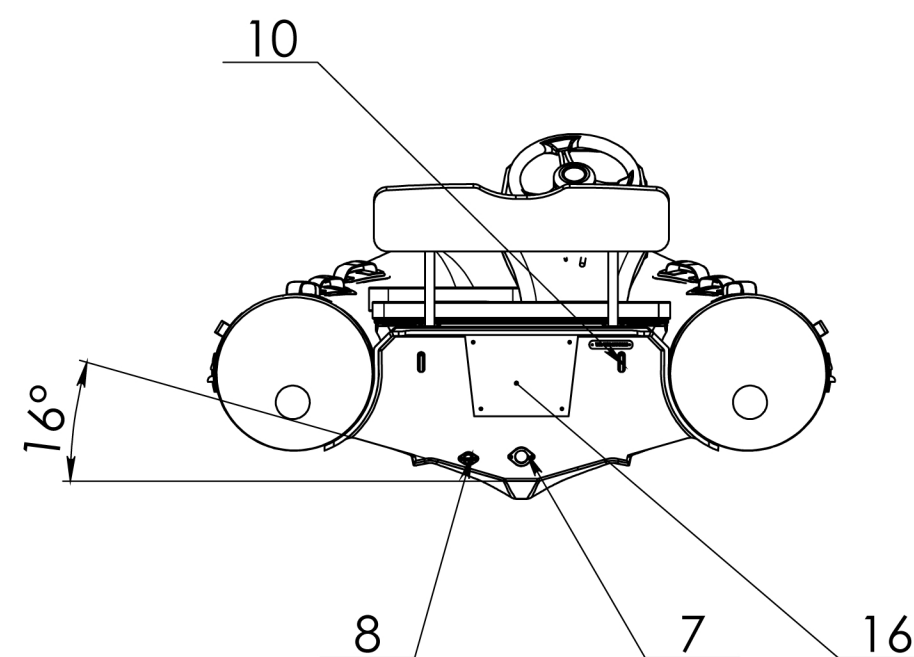
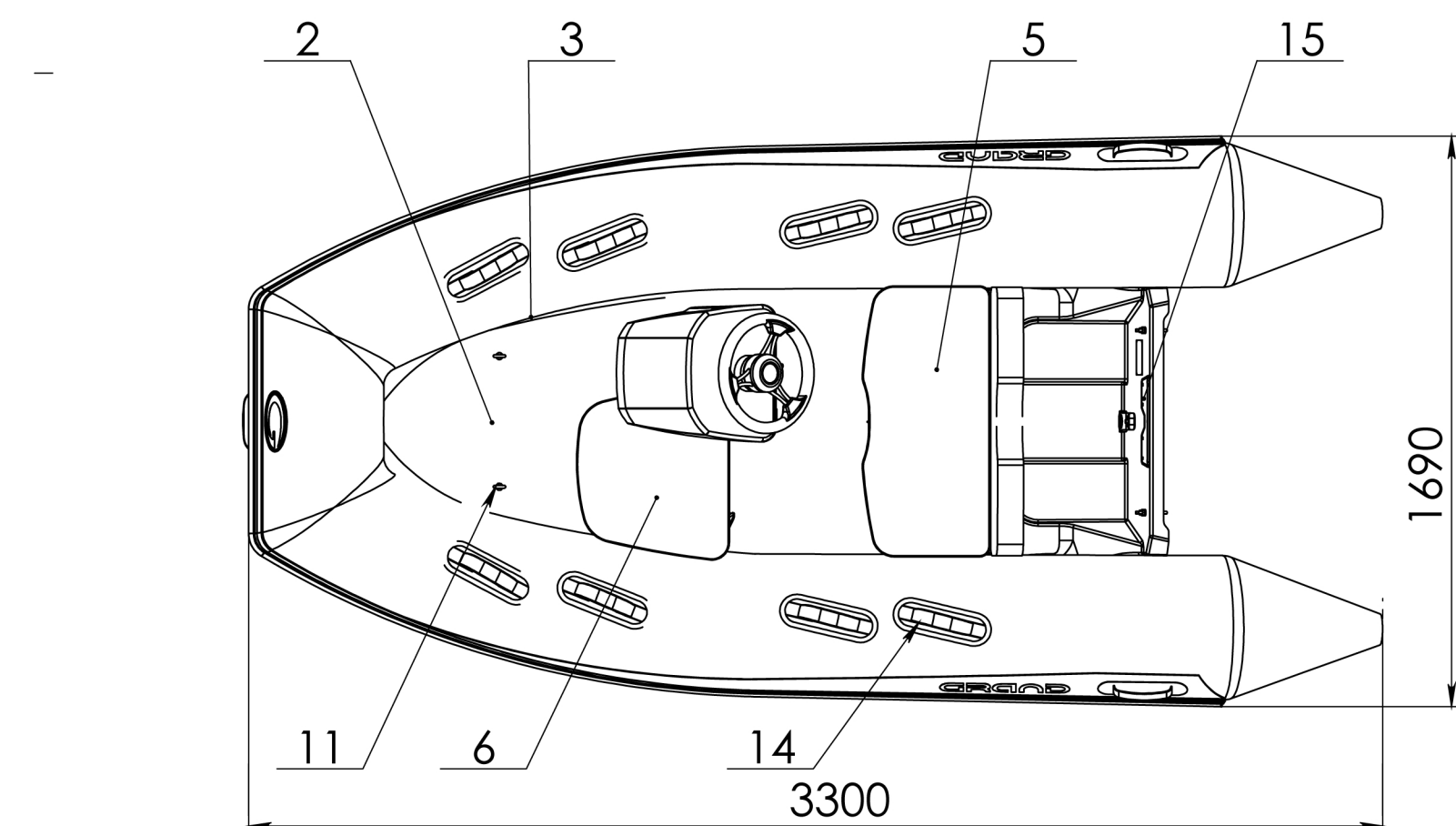
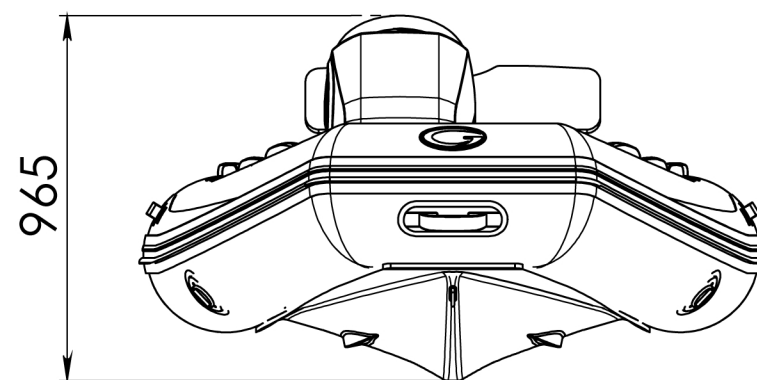
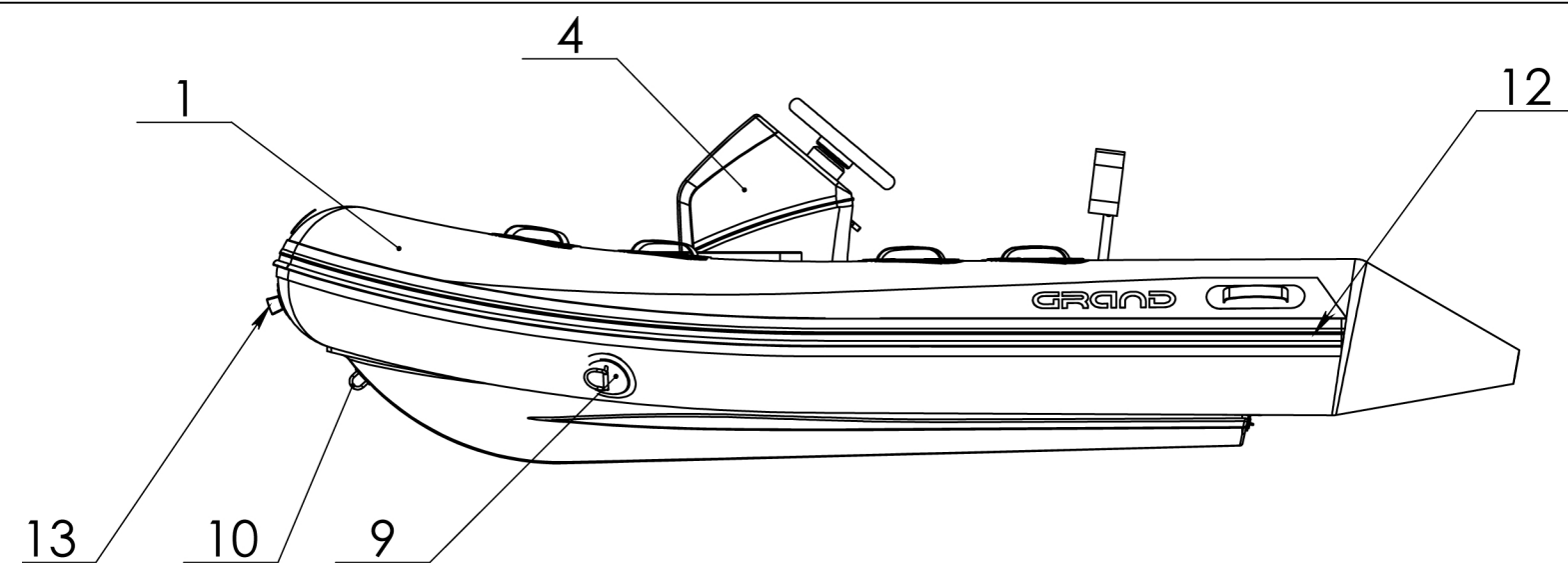
Passengers capacity	4
Max loading capacity (kg)	580
Boat weight (kg)	63

**TUBE**

Tube diameter (cm)	43
No of chambers	3
Tube volume (m*3)	0.87

Item	Item No	Description	Q-ty	Note
1	4207	Inflatable tube for S330	1	
2	4305	Fiberglass hull for S330	1	
3	4139	Inflation-deflation valve BRAVO-2005	3	
4	4501	Wooden seat №1 white	1	
5	4503	Wooden seat №2 white	1	
6	4448	Pull up drain valve	1	
7	4442	Drain through-hull with plug		
8	4259	Towing eye, PVC	2	
9	4403	U-bolt M8x100	3	
10		Front lifting eye	1	
11	4264	Rubbing strake, 100 mm	6.9 m	
12	4254	Wooden seat holder №1	2	
13	4262	Oarlock	2	
14	4256	Oar holder	2	
15	4102	Oar 160 cm with rivert	2	
16	4250	PVC handle grey / grey insertion	1	
17	425002	PVC handle grey /dark grey insertion	8	
18	4410	Motor plate internal 230x86	1	
19	4420	Motor plate external No1	1	
20		Rear handle	2	

UNLESS OTHERWISE SPECIFIED: DIMENSIONS ARE IN MILLIMETERS		FINISH:		DEBUR AND BREAK SHARP EDGES		DO NOT SCALE DRAWING		REVISION	
SURFACE FINISH:									
TOLERANCES:									
LINEAR:									
ANGULAR:									
DRAWN: Kruglyak		SIGNATURE:		DATE: 22.12.17		TITLE:		Silver Line S330	
CHK'D: Fedishin									
APP'VD:									
MFG:									
Q.A:						MATERIAL:		ITEM: 1030	
						WEIGHT:		SCALE:1:15	
								SHEET 1 OF 2	



**DIMENSION (cm)**

Lenght overall 330  
 Lenght inside 218  
 Wight overall 169  
 Winght inside 78

**CAPACITY**

Passengers capacity 4  
 Max loading capacity (kg) 580  
 Boat weight (kg) 84.9

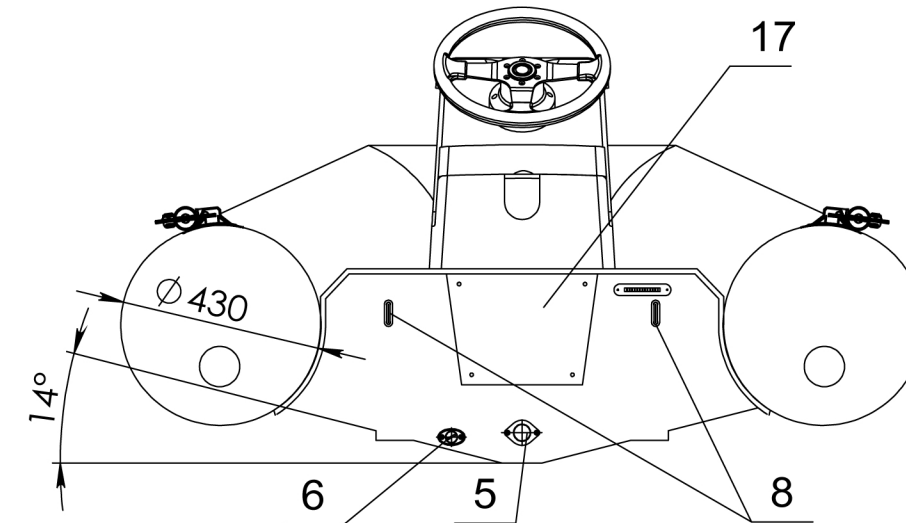
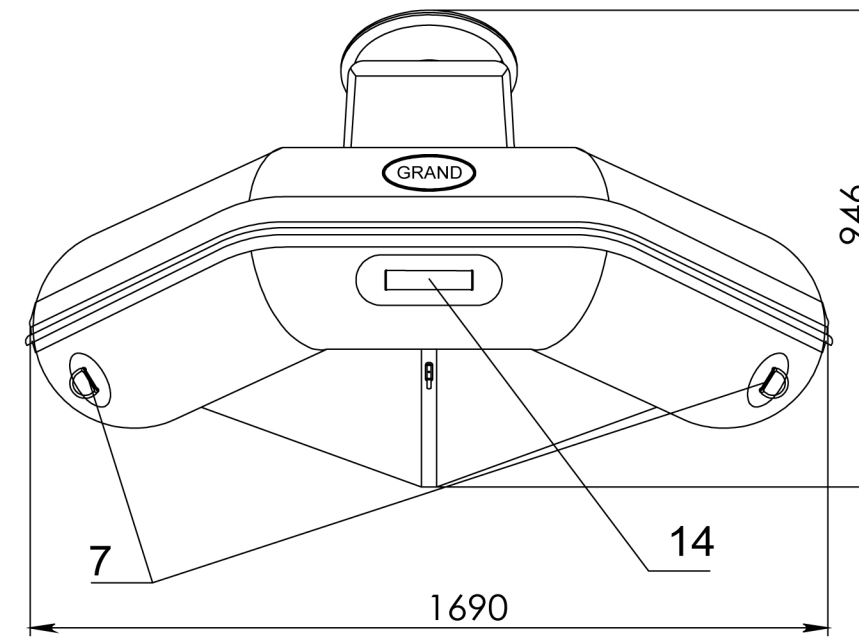
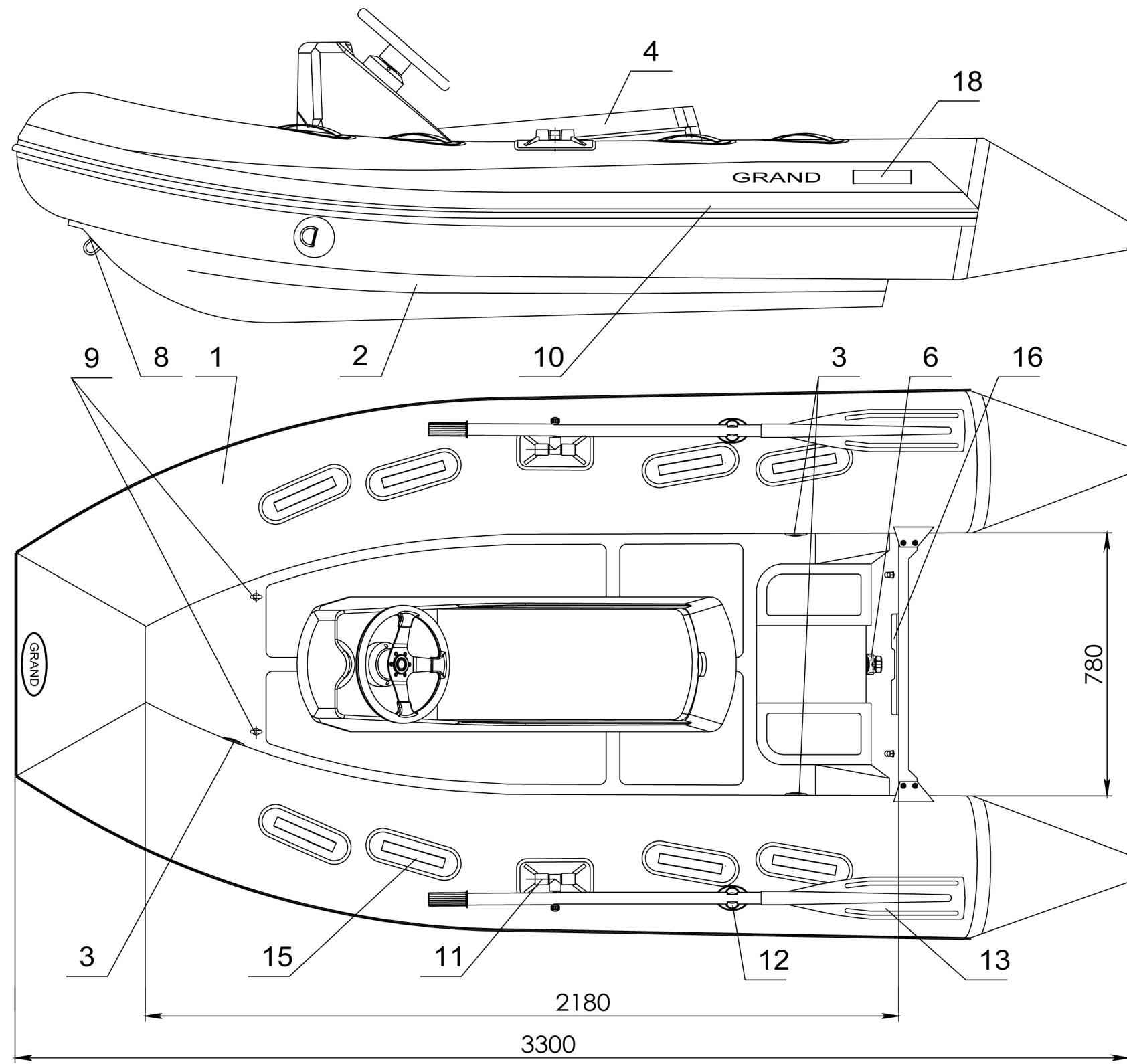
**TUBE**

Tube diametr (cm) 43  
 No of chambers 3  
 Tube volume (m\*3) 0.87

Engine max (HP) 25  
 Engine recommended (HP) 20

Item	Item No	Description	Q-ty	Note
1	4207	Inflatable tube for S330F	1	
2	4305	Fiberglass hull for S330	1	
3	4139	Inflation-deflation valve BRAVO-2005	3	
4	2224	Steering console CL-17	1	
5	2312	Doble seat SD-12 Double seat SD-12 with stowage and back	1	
6	2313	Console seat SD-14 with access door	1	
7	4448	Pull up drain valve	1	
8	4442	Drain through-hull with plug		
9	4259	Towing eye, PVC	2	
10	4403	U-bolt M8x100	3	
11		Front lifting eye	1	
12	4264	Rubbing strake, 100 mm	6.9 m	
13	4250	PVC handle grey / grey insertion	1	
14	425002	PVC handle grey /dark grey insertion	8	
15	4410	Motor plate internal 230x86	1	
16	4420	Motor plate external No1	1	

UNLESS OTHERWISE SPECIFIED: DIMENSIONS ARE IN MILLIMETERS				FINISH:		DEBUR AND BREAK SHARP EDGES		DO NOT SCALE DRAWING		REVISION	
SURFACE FINISH:				TOLERANCES:		LINEAR:		ANGULAR:		TITLE:	
DRAWN: Kruglyak				SIGNATURE:		DATE: 22.12.17				S330L. General View	
CHK'D:				APPVD:		MFG:		Q.A:			
								MATERIAL:		ITEM: 1032	
								WEIGHT:		SCALE: 1:20	
										SHEET 1 OF 1	



Item	Item No	Description	Q-ty	Note
1	4205	Inflatable tube for S330	1	
2	4306	Fiberglass hull for S330S	1	
3	4139	Inflation-deflation valve BRAVO-2005	3	
4	2208	Steering console CS-01	1	
5	4448	Pull up drain valve	1	
6	4442	Drain through-hull with plug	3	
7	4259	Towing eye, PVC	2	
8	4403	U-bolt M8x100	3	
9		Front lifting eye	1	
10	4264	Rubbing strake, 100 mm	6.6 m	
11	4262	Oarlock	2	
12	4256	Oar holder	2	
13	4102	Oar 160 cm with rivert	2	
14	4250	PVC handle grey / grey insertion	1	
15	425002	PVC handle grey /dark grey insertion	8	
16	4411	Motor plate internal 270x98	1	
17	4420	Motor plate external №1	1	
18		Rear handle	2	

**DIMENSION (cm)**

Lenght overall 330  
 Lenght inside 218  
 Wight overall 169  
 Winght inside 78

**CAPACITY**

Passengers capacity 4  
 Max loading capacity (kg) 580  
 Boat weight (kg) 84

**TUBE**

Tube diametr (cm) 43  
 No of chambers 3  
 Tube volume (m\*3) 0.87

Engine max (HP) 25  
 Engine recommended (HP) 15

UNLESS OTHERWISE SPECIFIED: DIMENSIONS ARE IN MILLIMETERS			FINISH:		DEBUR AND BREAK SHARP EDGES		DO NOT SCALE DRAWING		REVISION		
SURFACE FINISH:											
TOLERANCES:											
LINEAR:											
ANGULAR:											
DRAWN: Kruglyak		SIGNATURE:		DATE: 22.12.17						TITLE: Silver Line S330S	
CHK'D: Fedishin											
APPV'D:											
MFG:											
Q.A:						MATERIAL:		ITEM: 1031		A3	
						WEIGHT:		SCALE:1:15		SHEET 2 OF 2	